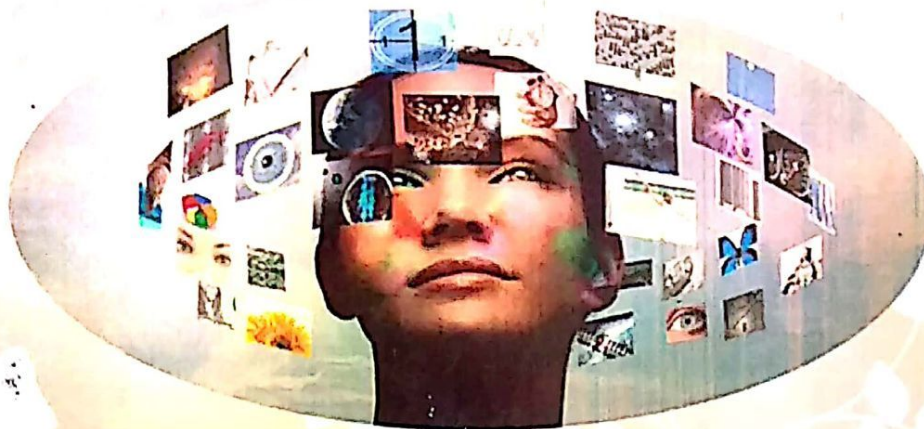


PROCEEDINGS

NATIONAL CONFERENCE ON INNOVATIVE TECHNOLOGIES & ADVANCED COMPUTING

Sep 11th, 2015



Organized by :
PG Department of Computer Applications



Fatima College (Autonomous)

(College with Potential for Excellence)

(Re-Accredited with A-Grade by NAAC)

Madurai-18.

www.fatimacollegemdu.org

NATIONAL CONFERENCE ON INNOVATIVE TECHNOLOGIES AND ADVANCED COMPUTING

NCITAC'15

Edited by

PG Department of Computer Applications

Fatima College

Autonomous

College with Potential for Excellence

Re-Accredited with "A" Grade by NAAC

Mary Land, Madurai-18.

Contents

1. PRIVACY PRESERVATION TECHNIQUES AND CRYPTOGRAPHY RSA IMPLEMENTED IN RAPID MINER TOOL - N. AMBIKA DEVI.....	4
2. BIG DATA – THE CONCEPT AND TOOLS - A.ANN REMOLA JEYANTHILI, T. SUGANYA2, M.MARTIN PORUS3.....	14
3. WEB USAGE AND MINING TECHNIQUES - Mrs. B. CHANDIRIKA.....	20
4. CLUSTERING BASED CBIR SYSTEM USING COLOR FEATURES - DELPHIN SAHAYA RANLI.....	21
5. MEASURES TO DETECT THE ATTACK ON WATERMARKED IMAGESWITH PSNR AND RGB INTENSITY – R.GANESH.....	25
6. A STUDY ON DIGITAL WATERMARKING TECHNIQUES AND VARIOUS ATTACKS FOR COPYRIGHT PROTECTION- R.GANESH.....	29
7. A COMPARISON OF DIFFERENT OPEN SOURCE PLATFORMS IN BIG DATA ANALYTICS – M.JANANI.....	37
8. BIOMETRICS FOR HEALTH CARE SECURITY - S.JEBAPRIYA.....	38
9. A STUDY ON CLOUD COMPUTING - N. JENIFER SHARON SUMATHI.....	39
10. A SURVEY ON INTELLIGENT TUTORING SYSTEM ARCHITECTURES – R.JOSEPHINE THERESE, R.JUSTIN KENNEDY.....	45
11. BIG DATA CONCEPTS AND ANALYTICS: AN OVERVIEW - S.JOSEPHINE THERESA1, DR. S. BENSON EDWIN RAJ2.....	56
12. SYSTEMATIC STUDENTS PERFORMANCE EVALUATION USING DATA MINING TECHNIQUES – Dr.K.KAVITHA.....	62
13. SECURITY ALGORITHMS IN CLOUD-COMPUTING – AN ANALYSIS - MRS. T.LEENA PREMAKUMARI.....	68
14. ANALYSING QUALITY OF SERVICE PARAMETERS IN WIRELESS SENSOR NETWORK- V.MAGESHWARI.,M.Sc.,M.Phil.,.....	76
15. NEURAL COMPUTATIONS UNDERLYING DYNAMIC DECISION MAKING - P. NANCY VINCENTINA MARY., MCA., M.PHIL.,.....	79
16. WEB SERVICE PROTECTION - S.MARY HELAN FELISTA.....	81
17. THRESHOLD ANALYSIS – IMAGE SEGMENTATION- MIDHU BALA.....	81
18. AN OVERVIEW OF E-COMMERCE WITH BIOMETRICAL RECOGNITION – M.MITHRA.....	82
19. ROLE OF DIFFERENT PROTOCOLS USED IN CLOUD COMPUTING - MRS.N.MUTHULAKSHMI	

this study introduced Modified Gabor Filter, a fast Principal Component Analysis algorithm with Support Vector Machine to address the issues of fingerprint and face image distortion respectively. From the experiment conducted from 100 patients with fingerprint and face image from each to give 20 test cases. The result shows that the proposed bimodal biometrics approach gives a lower False Rejection Rate and False Acceptance Rate and this shows better constructive accuracy of the system on patient EMR in healthcare infrastructure.

Index Terms: Electronic Medical Record, Principal Component Analysis, Support Vector Machine, False Rejection Rate.

9. A STUDY ON CLOUD COMPUTING - N. JENIFER SHARON SUMATHI

Assistant Professor, Research Center Of Commerce, (M.Com With Computer Applications) Fatima College, Madurai - 18

ABSTRACT

Cloud computing is a technology that provides on demand services to the users for deploying their computational needs in a virtualized environment without the knowledge of technical setup. The cloud service donors grant the services to the registered cloud users on payment basis through the gate. The cloud facilities are basically classified as SaaS, PaaS, and IaaS. The facilities are accessible to the users depending on cloud deployment and the SLA (service level agreements) between the service providers and the users. Cloud technology gives secure nature to the customers. Providing security to the users and trust into cloud environment is the responsibility of the cloud service providers. The main idea of this paper is to provide a clear view about the cloud service models, benefits of cloud computing, and drawbacks of cloud computing - mainly to outline the security issues.

INTRODUCTION

Cloud computing, which is an emerging technology, provides the proper hosting of resources by leasing them from huge data centers only when the