



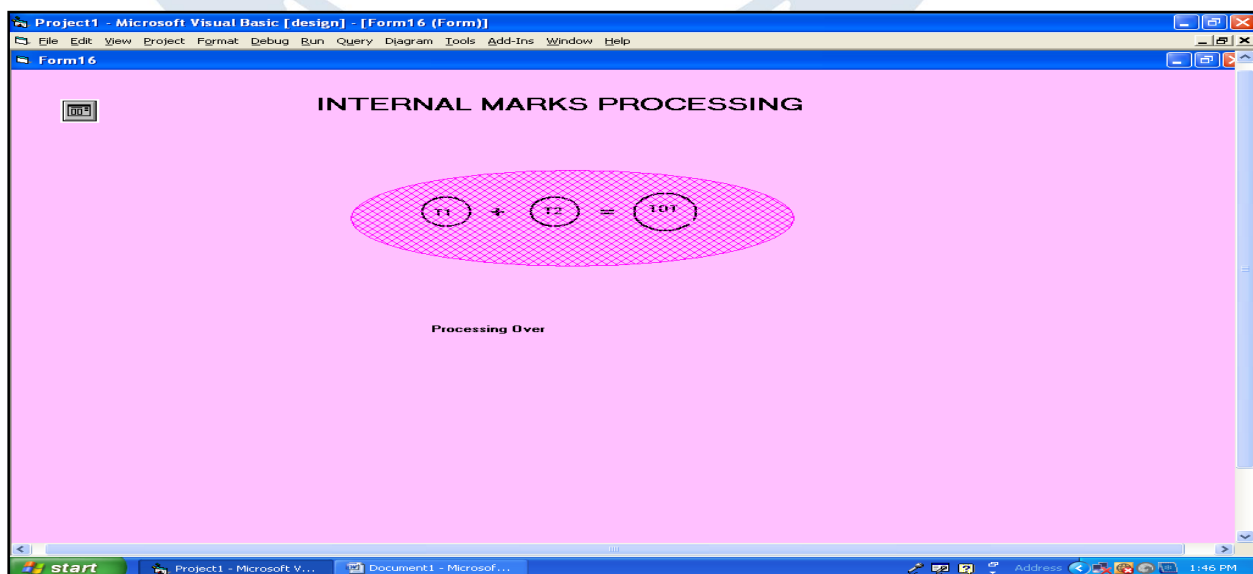
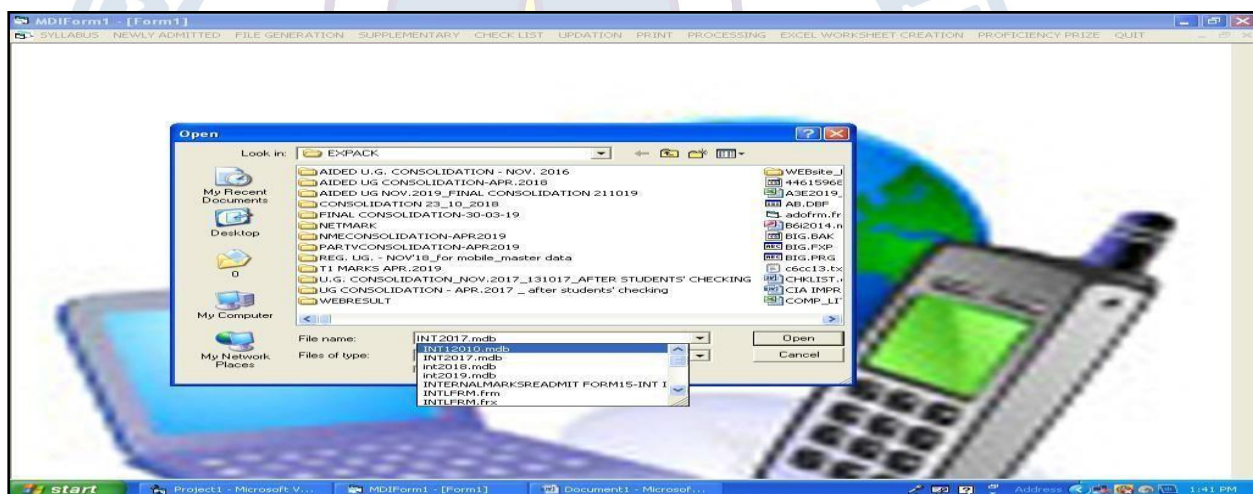
FATIMA COLLEGE

(Autonomous)

Affiliated to Madurai Kamaraj University
Re-Accredited with 'A++' by NAAC (Cycle - IV)
Mary Land, Madurai - 625 018, Tamil Nadu

EXAMINATION

INTERNAL MARKS PROCESSING





FATIMA COLLEGE

(Autonomous)

Affiliated to Madurai Kamaraj University
Re-Accredited with 'A++' by NAAC (Cycle - IV)
Mary Land, Madurai - 625 018, Tamil Nadu

SYLLABUS ENTRY



MDIForm1 - [Form3]

SEMESTER DETAILS OF THE SYLLABUS - HISTORY PREVIOUS ENTRY BATCH

PART TYPE OF THE PAPER (THEORY (INT+EXT) / PRACTICAL (INT+EXT) / THEORY & PRAC. / INTERNAL ONLY / EXTERNAL ONLY)

SUBJECT CODE TITLE OF THE PAPER

CREDIT

INTERNAL MARKS DISTRIBUTION

TEST-I

TEST-II

COMPONENTS

C1

C2

C3

INTERNAL MARKS

EXTERNAL MARKS

TOTAL MARKS

OFFERED BY OTHER DEPARTMENT

OPTIONAL / NON-OPTIONAL

ADDNEW DELETE

UPDATE EDIT

EXIT

EXTERNAL PASSING MINIMUM

TOTAL PASSING MINIMUM

start for naac_VB PACKAG... Project1 - Microsoft V... MDIForm1 - [Form3] Address 1:07 PM



FATIMA COLLEGE

(Autonomous)

Affiliated to Madurai Kamaraj University
Re-Accredited with 'A++' by NAAC (Cycle - IV)
Mary Land, Madurai - 625 018, Tamil Nadu

NOMINAL ROLL ENTRY (NEWLY ADMITTED)

The screenshot shows a web application window titled 'Form4'. It contains a 'Select a Course' section with a grid of radio buttons for various courses. Below this is a 'MAJOR:' label, followed by input fields for 'REG. NO.' and 'NAME'. Navigation buttons include '<<', '<', '>', '>>', and a central button 'Click here to move the record pointer'. At the bottom are buttons for 'NEW TABLE', 'OPEN A TABLE', 'ADD NEW RECORD', 'SAVE', 'EDIT', 'DELETE', and 'EXIT'. The Windows taskbar at the bottom shows the 'start' button and several open applications.

Select a Course

<input type="radio"/> History	<input type="radio"/> Economics	<input type="radio"/> Sociology	<input type="radio"/> English	<input type="radio"/> Tamil	<input type="radio"/> Commerce
<input type="radio"/> Mathematics (R)	<input type="radio"/> Physics	<input type="radio"/> Chemistry	<input type="radio"/> Zoology	<input type="radio"/> Home Science(FBT)	<input type="radio"/> Computer Science
<input type="radio"/> Mathematics (SF)	<input type="radio"/> B.B.A.	<input type="radio"/> B.C.A.	<input type="radio"/> Commerce(CA)	<input type="radio"/> IT	
<input type="radio"/> M.A. Economics	<input type="radio"/> M.A. Tamil	<input type="radio"/> M.Sc. Physics	<input type="radio"/> M.Com.		
<input type="radio"/> M.Phil.(Economics)	<input type="radio"/> M.Phil.(Tamil)	<input type="radio"/> M.Phil.(Commerce)			
<input type="radio"/> M.B.A.	<input type="radio"/> M.C.A.	<input type="radio"/> M.SC.(IT&M)	<input type="radio"/> M.SC.(CS&IT)		
<input type="radio"/> M.A.English	<input type="radio"/> M.S.W.	<input type="radio"/> M.Sc. Mathematics	<input type="radio"/> M.Sc. Chemistry	<input type="radio"/> M.Sc. Human Nut. Neutra.	
<input type="radio"/> P.G.D.C.A.	<input type="radio"/> F.D.G.C.	<input type="radio"/> D.C.A.			

MAJOR:

REG. NO.

NAME

<< < Click here to move the record pointer > >>

NEW TABLE OPEN A TABLE ADD NEW RECORD SAVE EDIT DELETE EXIT

FILE GENERATION

- Creation of Internal and External databases (merging of Nominal Roll and Syllabus tables)





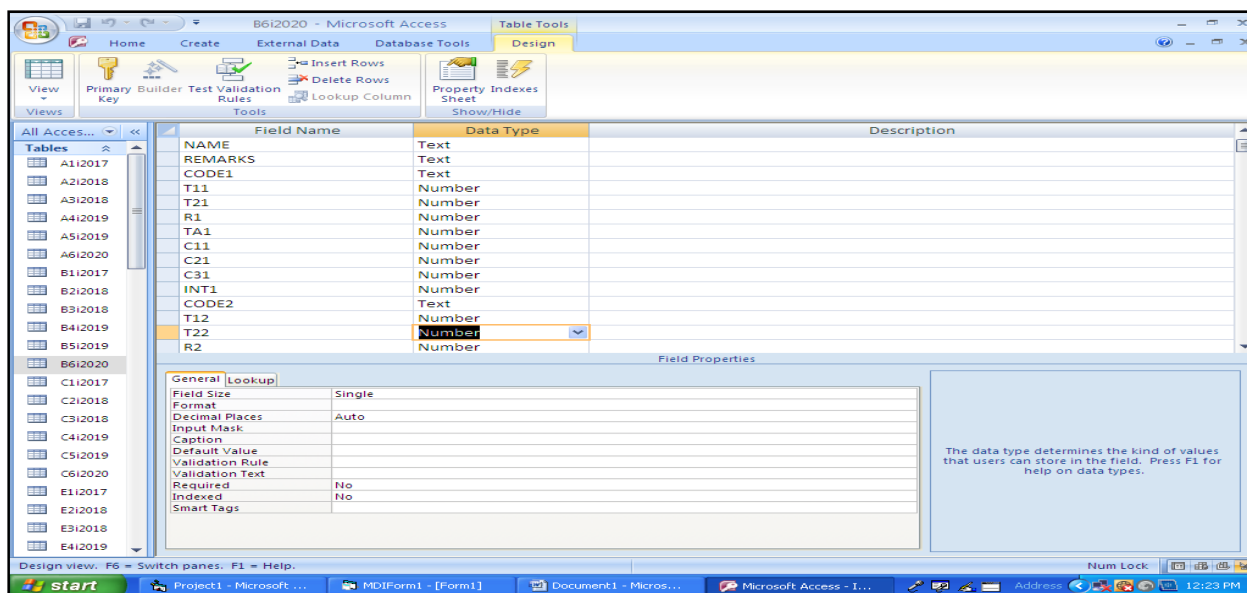
FATIMA COLLEGE

(Autonomous)

*Affiliated to Madurai Kamaraj University
Re-Accredited with 'A++' by NAAC (Cycle - IV)*

Mary Land, Madurai - 625 018, Tamil Nadu

INTERNAL MARKS ENTRY TABLE CREATION



FOR SUPPLEMENTARY EXAM





FATIMA COLLEGE

(Autonomous)

Affiliated to Madurai Kamaraj University
Re-Accredited with 'A++' by NAAC (Cycle - IV)
Mary Land, Madurai - 625 018, Tamil Nadu

SUPPLEMENTARY - FILE CREATION

Project1 - Microsoft Visual Basic [design] - [Form27 (Form)]

File Edit View Project Format Debug Run Query Diagram Tools Add-Ins Window Help

Form27

Reg. No. Name of a Student

Click the Reg. No.

List1

ALL >>

Applied Subject Codes

Click the Sub. Codes to be reappearance

Update

start Project1 - Microsoft V... for naac_VB PACKAG...

MDIForm1 [Form1]

SYLLABUS NEWLY ADMITTED FILE GENERATION SUPPLEMENTARY CHECK LIST UPDATION PRINT PROCESSING EXCEL WORKSHEET CREATION PROFICIENCY PRIZE QUIT

TOTAL CREDITS
PART IV PART V ABSENTEES
ZERO ENTRIES

start Project1 - Microsoft V... MDIForm1 - [Form1] for naac_VB PACKAG...